

1 CR 120-7 A-F-A-E-HBQE



: 95922157

(. . " - "),

DIN.

: 0 .. 120 °C
 : 20 °C
 : 998.2 / ³

: 2975 /
 : 120 ³/
 : 163.2
 : HBQE
 : CE,TR
 - : ISO9906:2012 3B

EN-JS1050

DIN W.-Nr. 1.4301
 AISI 304
 Graflon

- : 30 / 55 °C
 30 / 120 °C
 30 / 0 °C

: DIN
 : DN 125
 : PN 25/40
 : FF500

: SIEMENS
 : IE3

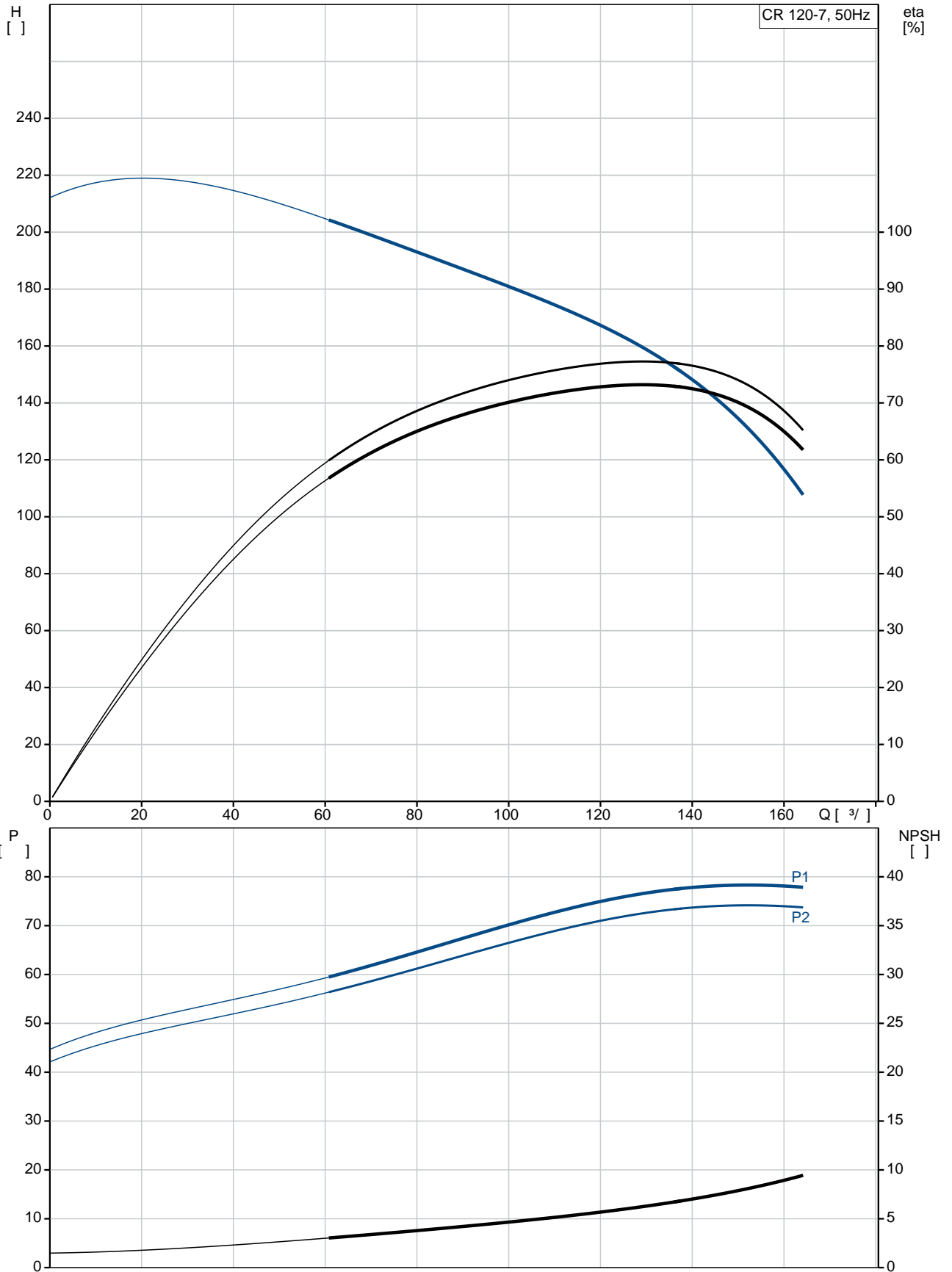
- P2: 75

(2), : 75

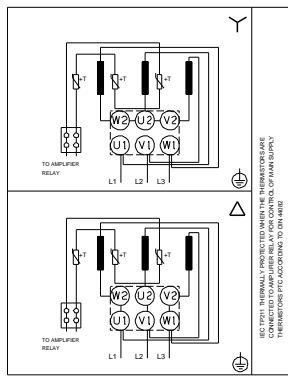
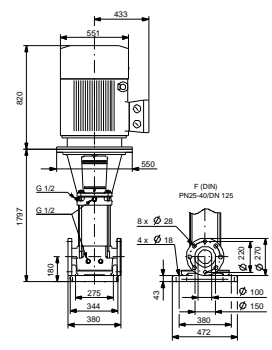
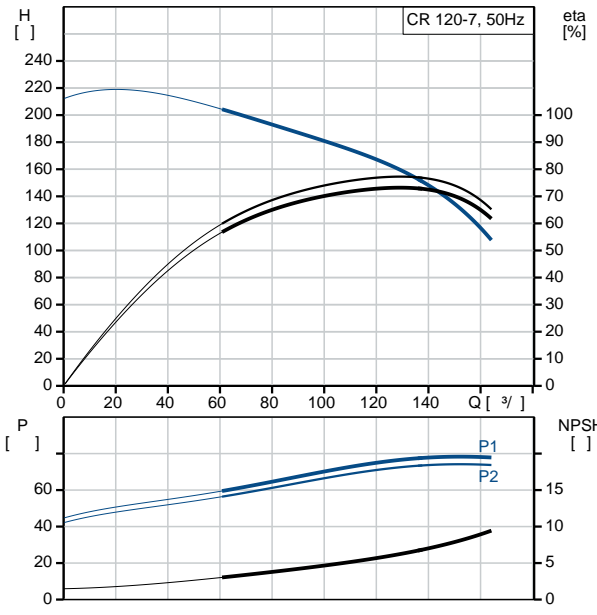
: 50 Hz

	:	3 x 380-420D/660-725Y V
	:	135-122/78,0-70,0 A
	:	680-680 %
Cos	-	: 0,89
	:	2975 /
	:	IE3 94,7%
	:	: 94.7-94.7 %
	:	3/4 : 94.8-94.8 %
	:	1/2 : 94.1-94.1 %
	:	2
	:	(IEC 34-5): 55 Dust/Jetting
	:	(IEC 85): F
	:	
	:	, MEI : 0.7
	:	746
	:	910

95922157 CR 120-7 50

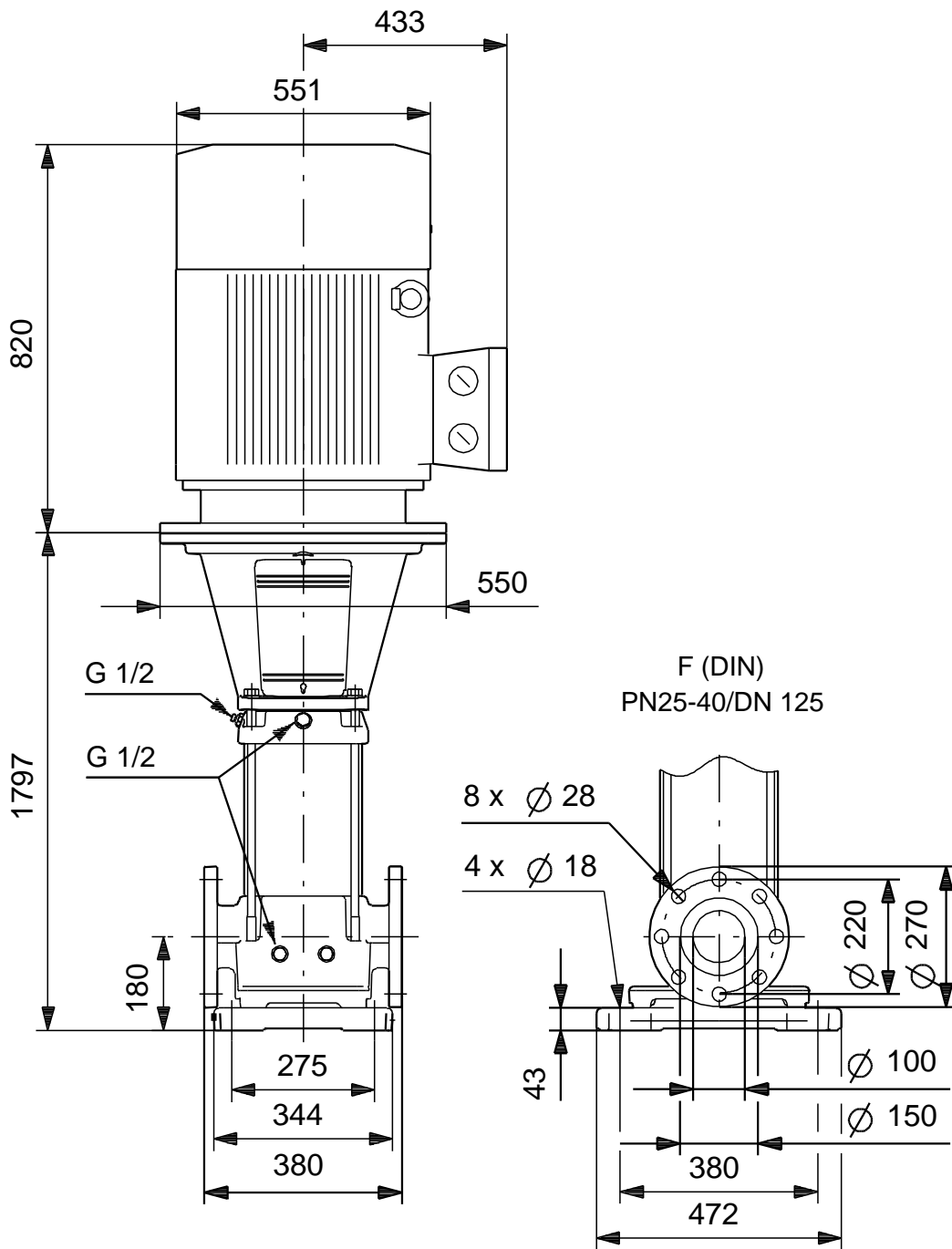


	CR 120-7 A-F-A-E-HBQE
	95922157
EAN	5700838933666
	2975 /
	120 ³ /
	163.2
	209.1
	7
	HBQE
	CE,TR
	ISO9906:2012 3B
	CR 120
	7
	A
	A
	EN-JS1050
	DIN W.-Nr. 1.4301
	AISI 304
	A
	E
	Graflon
	55 °C
	30 / 120 °C
	30 / 0 °C
	DIN
	F
	DN 125
	PN 25/40
	FF500
	0 .. 120 °C
	20 °C
	998.2 / ³
	SIEMENS
	IE3
	- P2: 75
(2),	75
	50 Hz
	3 x 380-420D/660-725Y V
	135-122/78,0-70,0 A
	680-680 %
Cos	0,89



		2975 /
		IE3 94,7%
		94.7-94.7 %
	3/4	94.8-94.8 %
1/2		94.1-94.1 %
		2
	(IEC 34-5):	55 Dust/Jetting
	(IEC 85):	F
		PTC
		81U15340
	, MEI :	0.7
		746
		910

95922157 CR 120-7 50



95922157 CR 120-7 50



IEC TP211 THERMALLY PROTECTED WHEN THE THERMISTORS ARE
CONNECTED TO AMPLIFIER RELAY FOR CONTROL OF MAIN SUPPLY
THERMISTORS PTC ACCORDING TO DIN 44082